

Eastport Yacht Club

Regatta Emergency Management Plan

A1 MEDICAL EMERGENCY

A1.1 A boat experiencing a medical emergency will contact the Principal Race Officer (PRO) on VHF channel 73. It is important that the hailing competitor remains calm and provides the following information:

- A description of the boat (sail number, unique color or graphic, etc.);
- The nature of the injury; and,
- An approximate position on the racecourse.

A1.2 All competitors and mark boats will minimize VHF communications.

A1.3 The PRO will send the closest available mark boat to assess the situation.

A1.4 The mark boat will provide to the PRO additional information pertaining to the extent of the injury (or injuries) and mobility of the patient(s).

A1.5 The PRO will contact 911 Emergency Services and coordinate a rendezvous location for the competitor to meet the responding fire/rescue professionals. The PRO will also initiate an emergency call on VHF channel 16 (*MAYDAY, PAN PAN, or SECURITE*) and coordinate with any responding vessels.

A1.6 If necessary and/or appropriate, the assisting mark boat will escort or transport the victim(s) to the rendezvous location identified in A1.5. Note that in most cases it is undesirable and/or unwise to transfer a victim from a competitor boat to a mark boat.

A2 COLLISION

A2.1 A boat involved in a collision will contact the PRO on VHF channel 73. It is important that the hailing competitor remains calm and provides the following information:

- A description of the boat (sail number, unique color or graphic, etc.);
- The extensiveness of the damage and whether there are injured competitors; and,
- An approximate position on the racecourse.

A1.2 All competitors and mark boats will minimize VHF communications.

A1.3 The PRO will send the closest available mark boat to assess the situation.

A1.4 The mark boat will provide to the PRO additional information pertaining to the extent of the damage and/or injuries, and the mobility of the boat(s).

A1.5 If necessary and/or appropriate, the assisting mark boat will escort the affected boat(s) to safe harbor location identified by the PRO.



A3 SAFE HARBOR / INCLEMENT WEATHER

- A3.1 The PRO will identify on VHF channel 73 the nearest and most appropriate safe harbor location for competitors to head towards.
- A3.2 All mark boats will escort the competitor fleet to the designated safe harbor location; refer to FIGURE A-1.
- A3.3 All competitors will prepare themselves and their boats for the oncoming weather. This includes donning appropriate safety gear (life jackets), and securing sails and equipment to the deck, mast, and/or boom.
- A3.4 Once inside the safe harbor, the PRO will initiate a roll-call of boats on VHF channel 73. The PRO will attempt alternate means of contact for all boats that are unaccounted for (cell phone, secondary phone number, etc.). The PRO will exercise best judgment when to notify 911 Emergency Services and/or search and rescue via VHF Channel 16.
- A3.5 Competitors will await further instruction from the PRO when the inclement weather clears and it is time to leave the designated safe harbor.

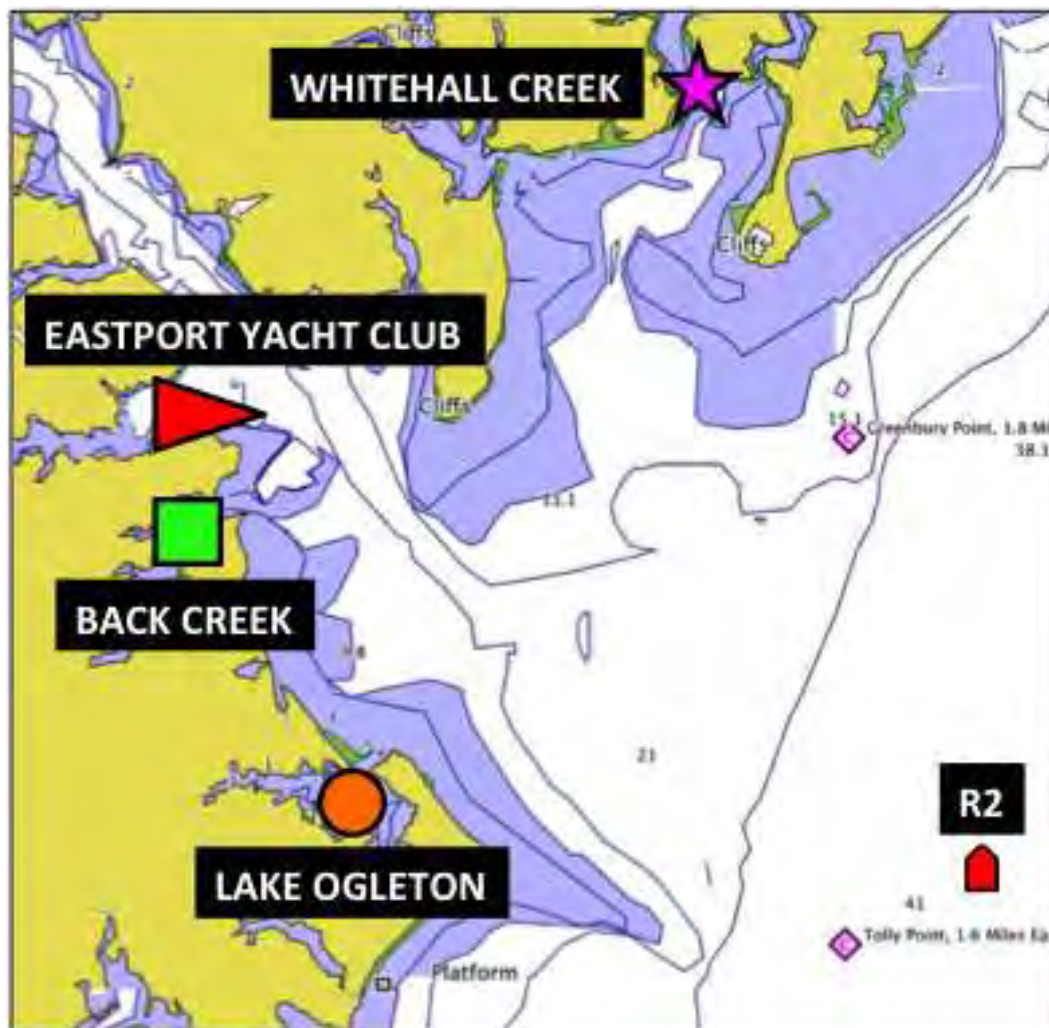


FIGURE A-1

Safe Harbor Locations